



TECHNICAL INFORMATION

Telephone: (765) 742 5664

Website: www.longpac.org

Address: 111 North 6th Street Lafayette, IN 47901

Executive Director: John Hughey
(765) 742 5664 Ext. 1

Business Manager: Christine Isbell
(765) 742 5664 Ext. 3

Operations & Events Manager: Stephanie Lester
(765) 742 5664 Ext. 2

Technical Director: Michael Kaufman
(765) 586-5822

Directions to Long PAC

From I-65 north or south bound:

Take the State Road 26 exit

State Road 26 west towards 6th Street (Columbia St. in Downtown Lafayette)

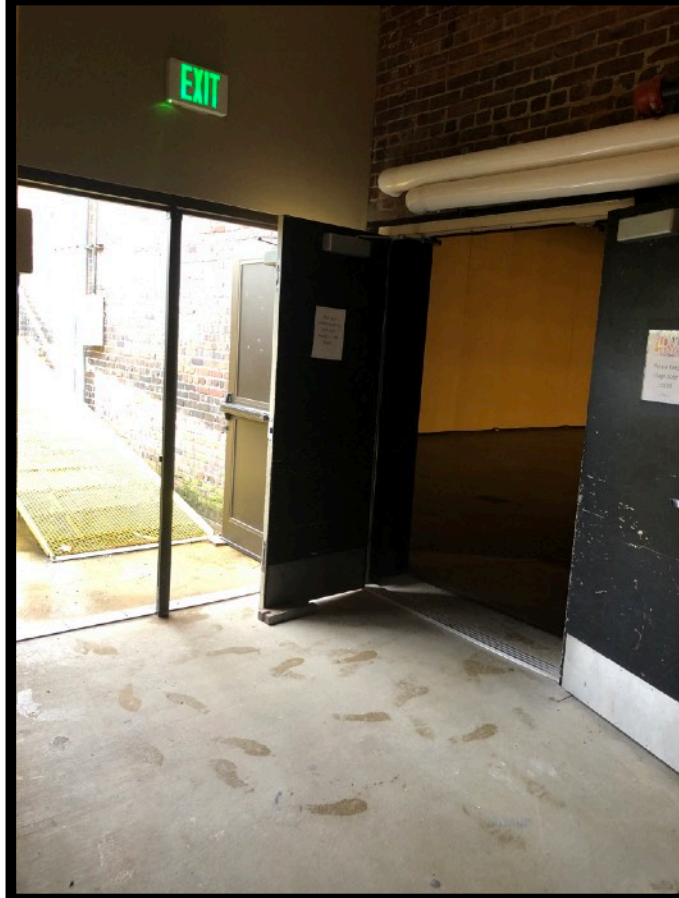
•TO REAR OF THEATER: LOAD IN

Heading west on Columbia Street, turn right into access drive, pull around to the right and back in to the rear of the theatre.

•TO FRONT OF THEATER

Heading west on Columbia Street, turn right onto 6th Street: 1/2 block on the right





Theatre Seating

1155 on two levels – 570 main floor, 585 balcony

The first five rows of main floor seats are fully removable.

SECOND FLOOR											
W	210	209	208	207	206	205	204	203	202	201	VV
V	210	209	208	207	206	205	204	203	202	201	V
U	210	209	208	207	206	205	204	203	202	201	U
T	210	209	208	207	206	205	204	203	202	201	T
S	210	209	208	207	206	205	204	203	202	201	S
R	210	209	208	207	206	205	204	203	202	201	R
Q		207	206	205	204	203	202	201			Q
P		207	206	205	204	203	202	201			P
O		207	206	205	204	203	202	201			O
N		207	206	205	204	203	202	201			N
M	210	209	208	207	206	205	204	203	202	201	M
L	210	209	208	207	206	205	204	203	202	201	L
K	210	209	208	207	206	205	204	203	202	201	K
J	210	209	208	207	206	205	204	203	202	201	J
H	210	209	208	207	206	205	204	203	202	201	H
G	210	209	208	207	206	205	204	203	202	201	G
F	210	209	208	207	206	205	204	203	202	201	F
E	210	209	208	207	206	205	204	203	202	201	E
D	210	209	208	207	206	205	204	203	202	201	D
C	209	208	207	206	205	204	203	202	201		C
B	209	208	207	206	205	204	203	202	201		B
A	209	208	207	206	205	204	203	202	201		A

MAIN FLOOR																															
ADA Seating 3 wheelchair and 3 companion				Sound Booth				ADA Seating 3 wheelchair and 3 companion																							
V	208	207	206	205	204	203	202	201	12	11	10	9	8	7	6	5	4	3	2	1	101	102	103	104	105	106	107	108	V		
U	208	207	206	205	204	203	202	201	12	11	10	9	8	7	6	5	4	3	2	1	101	102	103	104	105	106	107	108	U		
T	208	207	206	205	204	203	202	201	12	11	10	9	8	7	6	5	4	3	2	1	101	102	103	104	105	106	107	108	T		
S	208	207	206	205	204	203	202	201	12	11	10	9	8	7	6	5	4	3	2	1	101	102	103	104	105	106	107	108	S		
R	208	207	206	205	204	203	202	201	12	11	10	9	8	7	6	5	4	3	2	1	101	102	103	104	105	106	107	108	R		
Q	209	208	207	206	205	204	203	202	201	12	11	10	9	8	7	6	5	4	3	2	1	101	102	103	104	105	106	107	108	109	Q
P	209	208	207	206	205	204	203	202	201	12	11	10	9	8	7	6	5	4	3	2	1	101	102	103	104	105	106	107	108	109	P
O	209	208	207	206	205	204	203	202	201	12	11	10	9	8	7	6	5	4	3	2	1	101	102	103	104	105	106	107	108	109	O
N	209	208	207	206	205	204	203	202	201	12	11	10	9	8	7	6	5	4	3	2	1	101	102	103	104	105	106	107	108	109	N
M	209	208	207	206	205	204	203	202	201	12	11	10	9	8	7	6	5	4	3	2	1	101	102	103	104	105	106	107	108	109	M
L	209	208	207	206	205	204	203	202	201	12	11	10	9	8	7	6	5	4	3	2	1	101	102	103	104	105	106	107	108	109	L
K	209	208	207	206	205	204	203	202	201	12	11	10	9	8	7	6	5	4	3	2	1	101	102	103	104	105	106	107	108	109	K
J	209	208	207	206	205	204	203	202	201	12	11	10	9	8	7	6	5	4	3	2	1	101	102	103	104	105	106	107	108	109	J
H	209	208	207	206	205	204	203	202	201	12	11	10	9	8	7	6	5	4	3	2	1	101	102	103	104	105	106	107	108	109	H
G	209	208	207	206	205	204	203	202	201	12	11	10	9	8	7	6	5	4	3	2	1	101	102	103	104	105	106	107	108	109	G
F	208	207	206	205	204	203	202	201	11	10	9	8	7	6	5	4	3	2	1		101	102	103	104	105	106	107	108		F	
E	206	205	204	203	202	201			11	10	9	8	7	6	5	4	3	2	1		101	102	103	104	105	106				E	
D	205	204	203	202	201				11	10	9	8	7	6	5	4	3	2	1		101	102	103	104	105					D	
C	205	204	203	202	201				10	9	8	7	6	5	4	3	2	1		101	102	103	104	105						C	
B	204	203	202	201					10	9	8	7	6	5	4	3	2	1		101	102	103	104							B	
A									9	8	7	6	5	4	3	2	1													A	



05/15/2023

Stage Information

1st access option:

Double-door at bottom of short flight (8 steps) of stairs.

1000lb. capacity ramp is available on the left side of stairs.

90 degree left turn at bottom through double-doors that enter at the DSR corner of the stage.

2nd access option:

Roll-up door at rear of theatre, 8' above stage floor.

3rd access option:

Front doors of theatre on 6th Street.

There is no loading dock. All loading is street-level. Please plan accordingly.

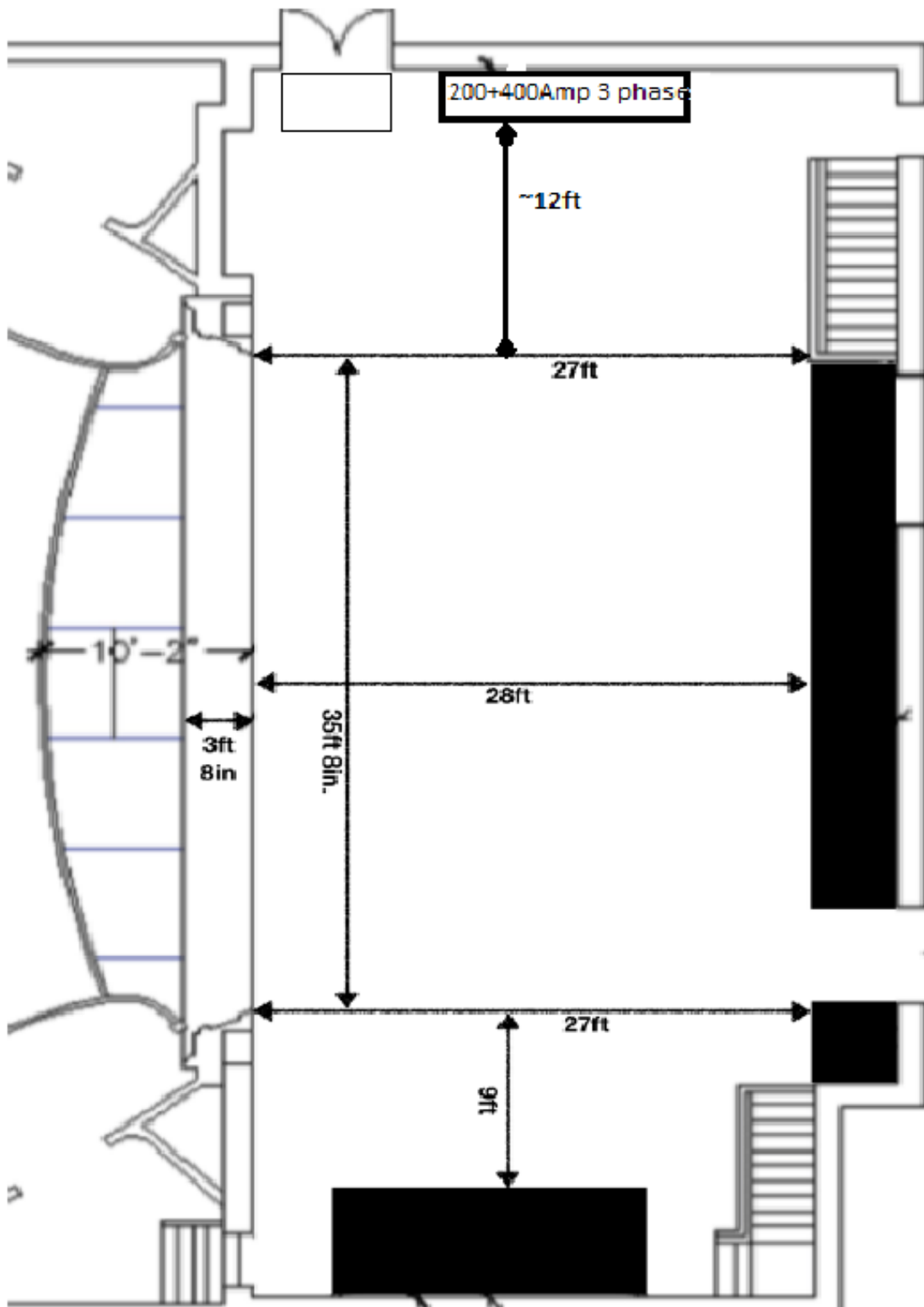
Proscenium Opening: 35' 10" wide x 25' 0" high

Stage Depth from Proscenium Line: 28' 0" +/-

Apron Depth from Proscenium: 10' 0"

Stage floor: wood over wood framing, black

Orchestra Pit: Approx. 35' x 6' 7" x 4' deep with removable pit covers



RIGGING SCHEDULE					
LINESSET #	DISTANCE FROM PLASTER LINE	CAPACITY	FUNCTION	SPECIFICATIONS	NOTES
1	1' 5"	600#	GUILLOTINE	41' 0" W X 27' 0" H RED 50% FULLNESS	CANNOT BE REMOVED FROM RIGGING
2	2' 1"	600#	MAIN TRAVELER	44' 0" W X 26' 0" H RED 50% FULLNESS	CANNOT BE REMOVED FROM RIGGING
3	2' 9"	600#	ACOUSTIC CEILING #1		CANNOT BE REMOVED FROM RIGGING
4	4' 1"	960#	ELECTRIC #1	SINGLE PURCHASE	
5	5' 5"	600#	LEGS	2 PANELS, EACH: 6' 0" W X 26' 0" H BLACK 50% FULLNESS	
6	6' 1"	600#	BORDER	41' 0" W X 12' 0" H BLACK 50% FULLNESS	
7	7' 5"	600#	FRAMED FRONT PROJECTION SCREEN		CANNOT BE REMOVED FROM RIGGING
8	8' 9"	600#	EMPTY PIPE		
9	9' 5"	600#	MID-STAGE TRAVELER	44' 0" W X 26' 0" H BLACK 50% FULLNESS	CANNOT BE REMOVED FROM RIGGING
10	10' 1"	600#	ACOUSTIC CEILING #2		CANNOT BE REMOVED FROM RIGGING
11	11' 5"	960#	ELECTRIC #2	SINGLE PURCHASE	
12	12' 9"	600#	EMPTY PIPE		
13	14' 1"	600#	EMPTY PIPE		
14	15' 5"	600#	LEGS	2 PANELS, EACH: 6' 0" W X 26' 0" H BLACK 50% FULLNESS	
15	16' 1"	600#	EMPTY PIPE		
16	16' 9"	600#	ACOUSTIC CEILING #3		CANNOT BE REMOVED FROM RIGGING
17	18' 1"	960#	ELECTRIC #3	SINGLE PURCHASE	
18	19' 5"	600#	EMPTY PIPE		
19	20' 9"	600#	EMPTY PIPE		
20	22' 1"	600#	BORDER	41' 0" W X 12' 0" H BLACK 50% FULLNESS	
21	22' 9"	600#	REAR TRAVELER	44' 0" W X 26' 0" H BLACK 50% FULLNESS	CANNOT BE REMOVED FROM RIGGING
22	23' 5"	600#	EMPTY PIPE		
23	24' 1"	600#	ACOUSTIC CEILING #4		CANNOT BE REMOVED FROM RIGGING
24	25' 5"	960#	ELECTRIC #4	SINGLE PURCHASE	
25	26' 9"	600#	EMPTY PIPE		
26	27' 1"	600#	CYCLORAMA	41' 0" W X 26' 0" H BLACK FLAT	
27	27' 9"	600#	EMPTY PIPE		

Dressing Rooms

St. John Pavilion (attached building)

1 star dressing room with private shower

4 group dressing rooms under the Stage:

Dressing room 1: 8 people

Dressing room 2: 6 people

Dressing room 3: 15 people

Dressing room 4: 13 people

Two showers

Men's and Women's Restrooms

Kitchenette (Sink and Microwave)

Green Room & makeup counter (8 people)

RIGGING/DRAPERY

Grid:

53' 6" height

Grid Construction:

3 steel loft wells perpendicular to proscenium,
steel purlins,
wood walking surface

Fly system:

27 Line-sets

18 - double-purchase, 600lb. capacity

4 - single-purchase (lighting), 960lb. capacity

4 - single-purchase with permanent Orchestra Shell

1 - permanent framed acoustic front-projection screen

Locking rail 10' above stage floor, access by straight ladder

No loading gallery for fly system.

LIGHTING & POWER

Lighting Console: Chmsys MQ 70

2 - 96 dimmer Strand CD-80 Dimmer Racks

Lighting positions:

Vertical FOH - above balcony seating

Balcony Rail FOH

8 - stage floor pockets on SL and SR with 3 circuits each

4 - single purchase counter weighted Electrics

Power located mid stage right:

1 - 200 amp service disconnect (3 phase camlock)

1 - 400 amp service disconnect (3 phase camlock)

—

ADDITIONAL EQUIPMENT AVAILABLE

Hydraulic platform lift - center of orchestra pit - permanent

Mighty Wurlitzer Theatre Pipe Organ (*resident in the building; arrangements must be made with the Long Center Theatre Organ Society*)

7' Yamaha Grand Piano

Music stands, padded orchestra chairs orchestra percussion, stand lights, etc.

(arrangements must be made with the Lafayette Symphony Orchestra)

Lectern, microphone can be attached

12,000 ANSI lumen Panasonic PT-DZ12000U with ET-D75LE10 lens
Mounted to balcony rail at center

Image will fill main projection screen

5,000 ANSI lumen Mitsubishi DLP projector for use in St. John Pavilion

Projection Screens:

1 - Main front projection screen, 20'H x 37' 6"W

1 - Installed electric roll up 10'H x 10'W in St. John Pavilion

SOUND

Main System:

JBL Line SRX Array

16 Box JBL SRX 910 LA line array 8 box / side

2 JBL SRX 906 Front fills

3 - JBL AC28/26 under balcony fills 3 JBL AC28/26 over balcony fills

4 JBL SRX 928s Subwoofer 2/ side on stage.

Monitor System (6 monitor mixes):

Yamaha CHR 12 m Passive Available

1 - Digico S31 console with 48 inputs

2 - Shure QLXD Digital receivers with BETA 58 handhelds

2- ULXD WITH BETA 58 A hand held

4- QLXD with belt packs with lavs.

Control Booth (located center at rear of main floor under balcony):

COMMUNICATION

Wired Clear-Com system